



**Universidade Estadual de Maringá**  
**Programa de Pós-Graduação em Ciências Farmacêuticas**

**CRISTIANE MORIWAKI**

**IMOBILIZAÇÃO DE *BACILLUS FIRMUS* CEPA 37 EM  
MATRIZES INORGÂNICAS PARA PRODUÇÃO DE  
CICLODEXTRINAS**

**MARINGÁ**

**2007**

# **Livros Grátis**

<http://www.livrosgratis.com.br>

Milhares de livros grátis para download.

**CRISTIANE MORIWAKI**

**IMOBILIZAÇÃO DE *BACILLUS FIRMUS* CEPA 37 EM  
MATRIZES INORGÂNICAS PARA PRODUÇÃO DE  
CICLODEXTRINAS**

Dissertação apresentada ao Curso de Pós-Graduação em Ciências Farmacêuticas, área de concentração em Produtos Naturais e Sintéticos Biologicamente Ativos da Universidade Estadual de Maringá como requisito parcial para a obtenção do título de Mestre em Ciências Farmacêuticas.

Orientadora: Profa. Dra. Graciette Matioli

**MARINGÁ**

**2007**

**CRISTIANE MORIWAKI**

**IMOBILIZAÇÃO DE *BACILLUS FIRMUS* CEPA 37 EM  
MATRIZES INORGÂNICAS PARA PRODUÇÃO DE  
CICLODEXTRINAS**

Esta é a versão final da dissertação de Mestrado apresentada por Cristiane Moriwaki perante a Comissão Julgadora do Programa de Pós-Graduação em Ciências Farmacêuticas em 15 de fevereiro de 2007.

**COMISSÃO JULGADORA**

Profª. Dra. Graciette Matioli – Orientadora  
Departamento de Farmácia e Farmacologia – Universidade Estadual de Maringá

Prof. Flávio Faria de Moraes, PhD – Membro  
Departamento de Engenharia Química – Universidade Estadual de Maringá

Prof. Dr. Arildo José Braz de Oliveira – Membro  
Departamento de Farmácia e Farmacologia – Universidade Estadual de Maringá

# IMOBILIZAÇÃO DE *BACILLUS FIRMUS* CEPA 37 EM MATRIZES INORGÂNICAS PARA PRODUÇÃO DE CICLODEXTRINAS

## RESUMO

Ciclodextrinas (CDs) são produzidas industrialmente a partir do amido utilizando a enzima ciclodextrina glicosiltransferase (CGTase). Células de *Bacillus firmus* cepa 37, imobilizadas por adsorção em diferentes matrizes inorgânicas, foram utilizadas para produção de  $\beta$ -CD. As matrizes foram preparadas pelo método sol-gel e a microscopia eletrônica de varredura mostrou que  $\text{SiO}_2/\text{TiO}_2$  e  $\text{SiO}_2/\text{MnO}_2$  foram as mais adequadas para uma efetiva imobilização. A estabilidade operacional das células imobilizadas foi estudada em reator batelada e os cultivos realizados em quatro ciclos de 144 horas cada. Ao final do segundo ciclo, as células imobilizadas em ambas as matrizes mantiveram 60% da produção de  $\beta$ -CD inicial, e uma queda gradual na produção de  $\beta$ -CD ocorreu até o quarto ciclo, devido à desorção de células das matrizes. A estabilidade de armazenamento foi estudada por 7 meses e a máxima produção de  $\beta$ -CD pelas células imobilizadas em  $\text{SiO}_2/\text{MnO}_2$  e  $\text{SiO}_2/\text{TiO}_2$  ocorreu com 90 dias de estocagem a 4°C ( $4,4 \pm 0,4$  e  $6,0 \pm 0,3$  mM de  $\beta$ -CD, respectivamente). Depois de 150 dias de estocagem, elas apresentaram a mesma produção de  $\beta$ -CD em relação ao biocatalisador recém preparado. Quando ciclos controle utilizando células livres foram realizados, eles produziram em média  $3,0 \pm 0,1$  mM de  $\beta$ -CD; conseqüentemente, as células imobilizadas mostraram um aumento de 1,5 a 2,0 vezes na produção de  $\beta$ -CD quando comparadas com células livres.

**Palavras-chave:** ciclodextrinas; *Bacillus firmus*; imobilização de células; matrizes inorgânicas; estabilidade operacional.

# IMMOBILIZATION OF *BACILLUS FIRMUS* STRAIN 37 IN INORGANIC MATRIX FOR CYCLODEXTRIN PRODUCTION

## ABSTRACT

Cyclodextrins (CDs) are produced industrially from starch, using bacterial cyclodextrin glucanotransferases (CGTase). Cells of *Bacillus firmus* strain 37, immobilized by adsorption in different inorganic matrix, were used for  $\beta$ -CD production. The matrices were prepared by the sol-gel method and scanning electron microscopy observations showed that SiO<sub>2</sub>/TiO<sub>2</sub> and SiO<sub>2</sub>/MnO<sub>2</sub> were the most suitable matrices for effective immobilization. The operational stability of the immobilized cells was studied by repeated batch cultivation in 4 cycles of 144 hours each. At the end of the second cycle, the cells immobilized in both matrices had maintained 60% of the  $\beta$ -CD production from the initial cycle, and a gradual fall in  $\beta$ -CD production occurred up to the fourth cycle, due to cell desorption from the matrices. Storage stability was studied for seven months and the maximum  $\beta$ -CD production by immobilized cells in SiO<sub>2</sub>/MnO<sub>2</sub> and SiO<sub>2</sub>/TiO<sub>2</sub> occurred within 90 days of storage at 4°C ( $4.4 \pm 0.4$  and  $6.0 \pm 0.3$  mM  $\beta$ -CD, respectively). After 150 days of storage, they presented the same  $\beta$ -CD production as freshly prepared biocatalysts. When control cycles using free cells were carried out, they produced on average  $3.0 \pm 0.1$  mM  $\beta$ -CD; hence, the immobilized cells showed a one-and-a-half to twofold increase in  $\beta$ -CD production compared to the free cells.

**Keywords:** cyclodextrins; *Bacillus firmus*; cell immobilization; inorganic matrix; operational stability.

## SUMÁRIO

<b>1. INTRODUCTION</b>	<b>8</b>
<b>2. MATERIALS AND METHODS</b>	<b>10</b>
<b>2.1 Microorganism and culture conditions</b>	<b>10</b>
<b>2.2 Matrices preparation and characterization</b>	<b>10</b>
<b>2.3 Immobilization procedure</b>	<b>12</b>
<b>2.4 Biocatalyst characterization</b>	<b>13</b>
<b>2.5 Analytical methods</b>	<b>14</b>
<b>2.5.1 Scanning electron microscopy (SEM)</b>	<b>14</b>
<b>2.5.2 <math>\beta</math>-CD determination</b>	<b>15</b>
<b>3. RESULTS AND DISCUSSION</b>	<b>16</b>
<b>3.1 Matrices characterization and microbial cells immobilization</b>	<b>16</b>
<b>3.2 Initial biomass effect</b>	<b>18</b>
<b>3.3 Operational stability</b>	<b>20</b>
<b>3.4 Storage stability</b>	<b>23</b>
<b>4. CONCLUSION</b>	<b>25</b>
<b>5. REFERENCES</b>	<b>26</b>

## LISTA DE FIGURAS

- Fig. 1** Reaction of tetraethylortosilicate (TEOS) hydrolysis in water. **11**
- Fig. 2** Scanning electron micrographs. Free cells (A). Immobilized cells: **17**  
SiO<sub>2</sub>/TiO<sub>2</sub> (B), SiO<sub>2</sub>/MnO<sub>2</sub> (C), V<sub>2</sub>O<sub>5</sub>/TiO<sub>2</sub> (D), V<sub>2</sub>O<sub>5</sub>/SiO<sub>2</sub> (E) and  
cellulose/TiO<sub>2</sub> (F).
- Fig. 3** Initial biomass effect on β-CD production by immobilized cells of **19**  
*Bacillus firmus* strain 37. A) SiO<sub>2</sub>/TiO<sub>2</sub> and B) SiO<sub>2</sub>/MnO<sub>2</sub> (● 1.2 g; ■  
1.8 g; ◆ 2.4 g and ▲ 3.0 g of immobilized cells). Conditions:  
maltodextrine 10% (w/v) in Tris-HCl buffer, pH 8.0, 50 mM and  
CaCl<sub>2</sub> 5 mM, 50°C and 120 rpm.
- Fig. 4** Operational stability of the immobilized cells of *Bacillus firmus* strain **22**  
37. A) SiO<sub>2</sub>/TiO<sub>2</sub> and B) SiO<sub>2</sub>/MnO<sub>2</sub> (● 1<sup>st</sup> cycle; ■ 2<sup>nd</sup> cycle; ◆ 3<sup>rd</sup>  
cycle and ▲ 4<sup>th</sup> cycle). Conditions: maltodextrine 10% (w/v) in Tris-  
HCl buffer, pH 8.0, 50 mM and CaCl<sub>2</sub> 5 mM, 50°C and 120 rpm.
- Fig. 5** Storage stability of immobilized cells of *Bacillus firmus* strain 37. A) **24**  
SiO<sub>2</sub>/TiO<sub>2</sub> and B) SiO<sub>2</sub>/MnO<sub>2</sub>. Storage time: ● zero; ■ 60 days; ◆ 90  
days; ▲ 150 days and O 210 days. Conditions: maltodextrine 10%  
(w/v) in Tris-HCl buffer, pH 8.0, 50 mM and CaCl<sub>2</sub> 5 mM, 50°C and  
120 rpm.



## LISTA DE TABELA

<b>Table 1</b>	Specific surface area ( $S_0$ ), average volume ( $V_p$ ) and average diameter ( $D_p$ ) of the matrices pores.	<b>16</b>
----------------	---	-----------

## LISTA DE EQUAÇÕES

<b>Eq. (1)</b>	$M(OR)_n + \frac{n}{2} H_2O \rightarrow MO_{n/2} + nROH$	<b>11</b>
<b>Eq. (2)</b>	$M(OR)_n + H_2O \rightarrow M(OR)_{n-1}(OH) + ROH$	<b>11</b>
<b>Eq. (3)</b>	$M(OR)_n + M(OR)_{n-1}(OH) \rightarrow M_2O(OR)_{2n-2} + ROH$	<b>11</b>
<b>Eq. (4)</b>	$2M(OR)_{n-1}(OH) \rightarrow M_2O(OR)_{2n-2} + H_2O$	<b>11</b>
<b>Eq. (5)</b>	$C_{\beta - CD} = 0.3 \left( 1 - \frac{A_{550}}{A_{0/550}} \right) \left( 1 + 1.0813 \frac{A_{0/550}}{A_{550}} \right)$	<b>15</b>
<b>Eq. (6)</b>	$C_{\beta - CD} = a \left( 1 - \frac{A_{550}}{A_{0/550}} \right) \left( 1 + \frac{A_{0/550}}{K_{\beta - CD} a A_{550}} \right)$	<b>15</b>

## 1. INTRODUCTION

Cyclodextrins (CDs) are cyclic oligosaccharides containing six ( $\alpha$ -CD), seven ( $\beta$ -CD), eight ( $\gamma$ -CD) or more glucopyranose units linked by  $\alpha$ -(1,4) bonds, and are produced during degradation of starch by cyclodextrin glucanotransferases (CGTase) [1]. This enzyme is multifunctional, and its most specific reaction is the cyclization of maltooligosaccharides [2,3]. The CDs molecules contain a hydrophobic central cavity and a hydrophilic surface, and can form inclusion complexes with organic and inorganic molecules. They are extensively used in the food, cosmetics, pharmaceutical and agricultural industries [4,5].

Systems of immobilized cells have been applied for many biochemical processes and display several advantages, such as the repeated and prolonged use of cells, easy separation from the fermentation medium, higher reactor productivity, continuous fermentation with less sophisticated reactors and a low risk of contamination due to an increase in thermal stability [6-8]. In the biotransformation processes, the application of immobilized whole bacterial cells as a source of enzymes eliminates the need for them to be purified and, in some cases, the enzymes are more stable within the cell, which is their natural environment [9]. In addition, they provide a convenient system for obtaining products without involving the use of large fermenting reactors, labor-intensive and time-consuming centrifugations, and the handling of processing fluids, etc. [10,11].

In order to obtain a high level of activity and stability from the whole cells, various methods, including adsorption, covalent binding and gel entrapment, have been used for immobilization [12]. The oldest and easiest method is the adsorption of biocatalysts in macroscopic water-insoluble carriers, and a great selection of inorganic and organic materials have been used as support, including activated charcoal, aluminum oxide, diatomaceous earth, cellulose, porous glass and synthetic resin [10]. The immobilization method and the type of

matrix are important factors, which affect the stability and the catalytic activity of the biocatalysts. The significant enzyme yields and operational stability of the biocatalysts indicate the possibility of continuous enzyme production and, therefore, its resulting products [9].

In recent years, the sol-gel method has gradually gained relevance; being widely used for the immobilization of many biomolecules, including enzymes, microbial cells and antibodies. One of the main advantages of this method is the non-involvement of high temperatures and harsh chemical reactions. The materials are characterized by high homogeneity and purity, high superficial area and porosity control, and well-modeled particles, which have greater thermostability than organic molecules [12-14].

The production, characterization and immobilization of CGTase have been extensively described by various publications [4,15-22], however, very few research works are known which have used whole cells immobilization aiming at the production of the CGTase enzymes (*Bacillus circulans* ATCC 21783 [23-25], *Bacillus cereus* [17], *Bacillus amyloliquefaciens* [7] e *Bacillus agaradhaerens* [11]).

Considering our research group previous studies on the CGTase from *Bacillus firmus* strain 37, including the isolation of the microorganism, purification and characterization of its CGTase [15,16,21], optimization of the culture media for enzyme production [18] and immobilization of CGTase in chitosan, alumina and supports-controlled-pore silica [19,20], this research study aimed at producing CDs from the *Bacillus firmus* strain 37 immobilized in inorganic matrices, prepared by the sol-gel method.

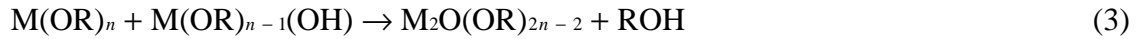
## 2. MATERIALS AND METHODS

### 2.1 Microorganism and culture conditions

The microorganism used in the current study was *Bacillus firmus* strain 37, isolated from soil cassava culture by Matioli et al. [15]. The microorganism was cultivated in solid medium, pH 10.3, containing (% p/V): soluble starch 1.0; polypeptone 0.5; yeast extract 0.5;  $K_2HPO_4$  0.1;  $MgSO_4 \cdot 7H_2O$  0.02; Congo red dye 0.01;  $Na_2CO_3$  1.0 and agar 1.5. The culture plates were incubated at 37°C for 48 hours, and the colonies were then transferred to 500 mL Erlenmeyer flasks containing 250 mL of liquid culture medium with the same composition as the plate medium, except for the presence of agar and dye. Incubation was carried out with 120 rpm orbital shaking at 37°C for 48 hours. The cells were harvested from the culture medium by centrifugation (2,000 x g, 10 min, 4° C) and later used for the immobilization procedures.

### 2.2 Matrices preparation and characterization

To immobilize the microorganism, five matrices were used: silica-titanium ( $SiO_2/TiO_2$ ), silica-manganese ( $SiO_2/MnO_2$ ), vanadium-titanium ( $V_2O_5/TiO_2$ ), vanadium-silica ( $V_2O_5/SiO_2$ ) and cellulose-titanium (cellulose/ $TiO_2$ ). These matrices were prepared by the sol-gel method (general equation (1)), which basically involves hydrolysis reactions (Eq. (2)) and polycondensation by dehydration (Eq. (3)), or dealcoholation (Eq. (4)) of the alkoxides precursors, forming oxopolymers that are transformed into a three-dimensional network of oxides [26, 27]:



where M=metal and  $M(OR)_n$  is the alkoxide precursor .

The reactions of hydrolysis and condensation occur by nucleophilic substitution before the catalysts, which can be acid, basic or nucleophilic. The reaction of hydrolysis (for example, the tetraethylortosilicate - TEOS) under acid conditions involves the protonation of the alkoxide group followed by the water nucleophilic attack, leading to the formation of an intermediate pentacoordinate (Fig. 1) [26, 27].

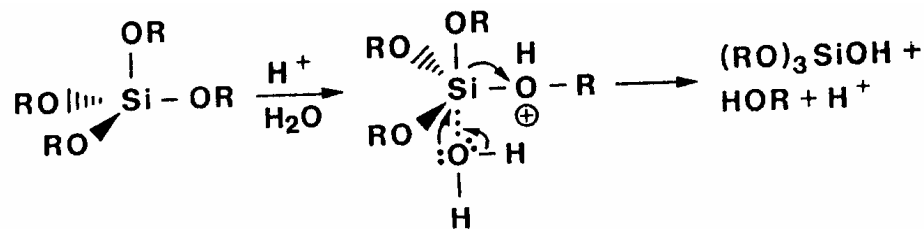


Fig. 1: Reaction of tetraethylortosilicate (TEOS) hydrolysis in water.

The SiO<sub>2</sub>/TiO<sub>2</sub> matrix was prepared by adding 12.1 mL of an aqueous solution of HNO<sub>3</sub> 0.85 mol/L in 250 mL of an ethanolic solution of TEOS 50% (v/v). The mixture remained under reflux and shaking at 80°C for 150 min. Then, 21 mL of tetrabutoxide of titanium (TBOT) and 490 mL of ethanol were added and the preparation was kept shaking at room temperature for 2 hours. 66 mL of an aqueous solution of HNO<sub>3</sub> 0.6 mol/L were slowly added and allowed to rest for gelation. The formed xerogels were ground, dried at 110°C for 24 hours and sieved in order to obtain particles size between 75 and 250 μm diameter. The SiO<sub>2</sub>/TiO<sub>2</sub> binary oxide obtained was calcinated at 500°C under air flow [13].

Based in the method used for the synthesis of SiO<sub>2</sub>/TiO<sub>2</sub>, SiO<sub>2</sub>/MnO<sub>2</sub> matrices were prepared, substituting TBOT for MnCl<sub>2</sub>.

The V<sub>2</sub>O<sub>5</sub>/SiO<sub>2</sub> and V<sub>2</sub>O<sub>5</sub>/TiO<sub>2</sub> matrices were prepared according to the method described by Schneider et al. [28], using HCl to hydrolyze TEOS and HNO<sub>3</sub> for TBOT, respectively. After that, vanadium triisopropoxide (VOTIP) was added for polycondensation. For preparing the cellulose/TiO<sub>2</sub> matrix, according to Porto et al. [10], TBOT with cellulose, previously suspended in heptane, was used. The matrices tested had the same diameter range as that obtained for SiO<sub>2</sub>/TiO<sub>2</sub>.

The five matrices were characterized according to their specific surface area ( $S_0$ ), measured by the Brunauer, Emmett e Teller (BET) multipoint technique [29]; average volume pores ( $V_p$ ), determined by mercurium intrusion technique [30]; and average diameter pores ( $D_p$ ).

### **2.3 Immobilization procedure**

Different amounts of *Bacillus firmus* strain 37 whole cells, with a known wet-cell weight (8.0 g dry cells/100g wet cells), were used for each of the immobilization procedures. One point two grams of wet-weight cells was used for the initial evaluation of microorganism immobilization in the five matrices, 1.2 to 3.0 g for studying the effect of the initial biomass concentration, and 2.4 g for the stability tests.

Cell immobilization was carried out with 50 mL of sterile distillate water, *Bacillus firmus* strain 37 wet cells and the appropriate sterilized matrix (0.6 g). The suspension was shaken at 120 rpm and kept at 28°C during 12 hours.

## 2.4 Biocatalyst characterization

The biocatalyst produced by the immobilization of *Bacillus firmus* strain 37 cells was characterized by determining its activity for the production of CDs and its storage and operational stability. All the experiments were carried out in duplicate.

The cells immobilized in SiO<sub>2</sub>/TiO<sub>2</sub> and SiO<sub>2</sub>/MnO<sub>2</sub>, with different concentrations of initial biomass, were centrifuged (800 x g, 3 min, 4°C), washed with sterile distillate water and submitted to the CD production cycle.

The method described by Matioli et al. [15] for CDs production using purified CGTase was adapted in this research study. For each cycle of CD production, the culture medium was constituted of 50 mL of maltodextrine 10% (w/v) in Tris-HCl buffer, pH 8.0, 50 mM and CaCl<sub>2</sub> 5 mM. The assay was performed at 50°C, with shaking of 120 rpm during 144 hours. Aliquots of 1 mL were drawn periodically (0, 6, 12, 24, 36, 48, 72, 96, 120 and 144 hours), diluted in 1 mL of distillate water and submitted to boiling for posterior dosage of β-CD produced. At the end of the cycle, the CGTase activity in the reaction medium was determined according to the method described by Matioli et al. [15]. One unit (U) of enzyme activity was defined as the amount of enzyme that produces 1 μmol β-CD/min under the assay conditions.

To determine the operational stability, four cycles of CDs production were carried out and after each cycle, the cells immobilized in SiO<sub>2</sub>/TiO<sub>2</sub> and SiO<sub>2</sub>/MnO<sub>2</sub> were removed from the production medium by centrifugation (800 x g, 3 min, 4°C), washed with sterile distillate water and kept at 4°C until re-utilization. For each cycle a new CD production medium was prepared and the CGTase activity was determined.

In order to evaluate the storage stability, the cells immobilized in  $\text{SiO}_2/\text{TiO}_2$  and  $\text{SiO}_2/\text{MnO}_2$  were divided into five aliquots and kept at  $4^\circ\text{C}$ . The aliquots were periodically sampled and submitted to the CD production cycles (zero time, 60, 90, 150 and 210 days of storage) with no re-utilization. Control cycles with free cells were also carried out in this assay.

To verify the possibility of cell desorption in  $\text{SiO}_2/\text{TiO}_2$  and  $\text{SiO}_2/\text{MnO}_2$  matrices and to analyze the chance of microbial growth after the immobilization in the matrices, the total protein content was determined [31] in newly immobilized samples and after the final cycle of CD production.

## **2.5 Analytical methods**

### **2.5.1 Scanning Electron Microscopy (SEM)**

The immobilized cells were placed in Tris-HCl buffer, pH 8.0, 50 mM and  $\text{CaCl}_2$  5 mM, containing 2.5% of glutaraldehyde, for 24 hours. After this time, the supernatant solution was discarded and the immobilized cells were washed in aqueous ethanolic solution 30, 50, 70, 90 and 100%. The material was kept in absolute ethanol for further dehydration in a supercritical fluid extraction system using  $\text{CO}_2$  under high pressure. The same procedure was carried out with free cells. To obtain the micrographs, a scanning electron microscope (Shimadzu - model SS 550) with an accelerating voltage of 10 kV was used. The samples of immobilized and free cells were put on the surface of a double face conductive tape and gold coated.



### 2.5.2 $\beta$ -CD determination

The  $\beta$ -CD concentration was measured by the dye-extinction colorimetric method using phenolphthalein solution [22]. The assay was performed by mixing 0.5 mL of sample containing  $\beta$ -CD with 2.5 mL of a phenolphthalein working solution 0.06 M, containing carbonate-bicarbonate buffer 0.12 M, pH 10.5 and the absorbance was read at 550 nm. For the blank, the sample was substituted by distillate water. The phenolphthalein working solution was prepared at the dosage moment from a stock solution of phenolphthalein 3 mM in 95% ethanol (2 mL of phenolphthalein stock solution, 20 mL of carbonate-bicarbonate buffer 0.6 M, pH 10.5, and the volume completed to 100 mL with distilled water). The concentration of  $\beta$ -CD was calculated with the Eq. (5), obtained by determination of the equilibrium constant ( $K_{\beta\text{-CD}}$ ) for the formation of an inclusion complex of  $\beta$ -CD with phenolphthalein. This constant was determined by non-linear regression of Eq. (6) to a series of absorbance data in function of standard concentration of  $\beta$ -CD ( $0 - 1 \times 10^{-3}$  M) prepared in distillate water

$$C_{\beta\text{-CD}} = 0.3 \left( 1 - \frac{A_{550}}{A_{0/550}} \right) \left( 1 + 1.0813 \frac{A_{0/550}}{A_{550}} \right) \quad (5)$$

where  $C_{\beta\text{-CD}}$  is the concentration of  $\beta$ -CD (mM),  $A_{550}$  and  $A_{0/550}$  are the absorbances of samples and blank, respectively.

$$C_{\beta\text{-CD}} = a \left( 1 - \frac{A_{550}}{A_{0/550}} \right) \left( 1 + \frac{A_{0/550}}{K_{\beta\text{-CD}} a A_{550}} \right) \quad (6)$$

where  $a$  is the total concentration of phenolphthalein in the assay cuvette ( $5 \times 10^{-5}$  M).

Firstly the concentrations of standard  $\beta$ -CD were corrected, taking into account the dilution performed in the cuvette (1:6) and the equilibrium constant ( $K_{\beta\text{-CD}}$ ) was calculated using the Quasi-Newton method, resulting in  $21627.10 \pm 85.61 \text{ M}^{-1}$ , for the confidence interval of 95%. Eq. (5) was obtained by the substitution of  $K_{\beta\text{-CD}}$  and  $a$  value in Eq. (6) and multiplying this equation by a factor equal to 6000 that is related to the dilution in the assay

procedure and the conversion from molar in the cuvette to give millimolar of  $\beta$ -CD in the sample.

### 3. RESULTS AND DISCUSSION

#### 3.1 Matrices characterization and microbial cells immobilization

The immobilization of the microorganism *Bacillus firmus* strain 37 in the five matrices studied was evaluated through the micrographs obtained by SEM. The bacterium size was estimated as  $0.5 \times 5.0 \mu\text{m}$  (Fig. 2A).

Table 1 shows the results of the specific surface area ( $S_0$ ), average volume ( $V_p$ ) and average diameter ( $D_p$ ) of the pores of the five matrices studied. Considering that the determined  $D_p$  are in average around 1,800 times smaller than the bacterium under study, it is possible to conclude that there was no possibility of microorganism penetration inside the matrices, meaning that the cells immobilization occurred by adsorption on their surface.

Table 1: Specific surface area ( $S_0$ ), average volume ( $V_p$ ) and average diameter ( $D_p$ ) of the matrices pores.

Matrices	$S_0$ ( $\text{m}^2/\text{g}$ )	$V_p$ ( $\text{mL}/\text{g}$ )	$D_p$ ( $\mu\text{m}$ )
$\text{SiO}_2/\text{TiO}_2$	503	0.35	0.0028
$\text{SiO}_2/\text{MnO}_2$	454	0.16	0.0014
$\text{V}_2\text{O}_5/\text{TiO}_2$	436	0.10	0.0009
$\text{V}_2\text{O}_5/\text{SiO}_2$	468	0.20	0.0017
cellulose/ $\text{TiO}_2$	48	0.08	0.0066

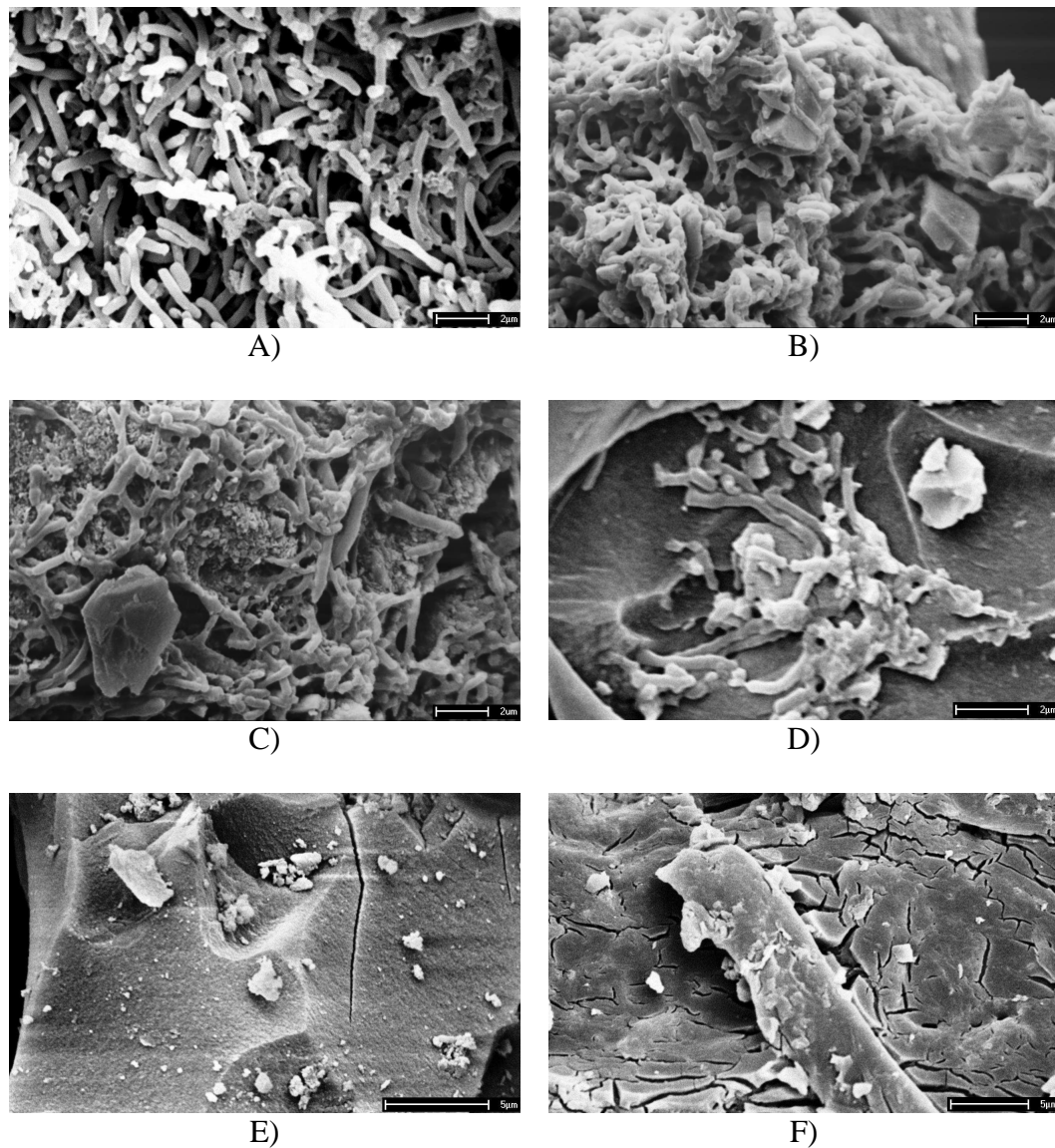


Fig. 2: Scanning electron micrographs. Free cells (A). Immobilized cells: SiO<sub>2</sub>/TiO<sub>2</sub> (B), SiO<sub>2</sub>/MnO<sub>2</sub> (C), V<sub>2</sub>O<sub>5</sub>/TiO<sub>2</sub> (D), V<sub>2</sub>O<sub>5</sub>/SiO<sub>2</sub> (E) and cellulose/TiO<sub>2</sub> (F).

The micrographs allowed observing that there was good adsorption of the bacterium in SiO<sub>2</sub>/TiO<sub>2</sub> and SiO<sub>2</sub>/MnO<sub>2</sub> matrices, a satisfactory adsorption in V<sub>2</sub>O<sub>5</sub>/TiO<sub>2</sub> matrix and practically no bacterium attached the V<sub>2</sub>O<sub>5</sub>/SiO<sub>2</sub> and cellulose/TiO<sub>2</sub> matrices (Fig. 2B-F). Therefore, SiO<sub>2</sub>/TiO<sub>2</sub> and SiO<sub>2</sub>/MnO<sub>2</sub> matrices were selected to continue the study.

### 3.2 Initial biomass effect

The amount of immobilized cell biomass in the support was a very important parameter which influenced the production of  $\beta$ -CD by the immobilized cells. For the  $\text{SiO}_2/\text{TiO}_2$  matrix, the use of an initial biomass load from 1.2 g to 3.0 g provided an increase in  $\beta$ -CD production of 20%, reaching  $13.4 \pm 0.2$  mM (Fig. 3A). For the immobilized cells in  $\text{SiO}_2/\text{MnO}_2$   $\beta$ -CD production was 25% higher when the amount of initial biomass, increased from 1.2 g to 1.8 g, and the production of  $\beta$ -CD remained practically constant when 2.4 g and 3.0 g of the cells were used, reaching  $17.9 \pm 0.1$  mM of  $\beta$ -CD produced (Fig. 3B).

The specific CGTase productivity showed a decrease from 60.8 to 29.3 U/g wet cells  $\times$  h and 77.5 to 38.6 U/g wet cells  $\times$  h when the initial biomass was raised from 1.2 g to 3.0 g for the immobilized cells in  $\text{SiO}_2/\text{TiO}_2$  and  $\text{SiO}_2/\text{MnO}_2$ , respectively, suggesting that biofilm layers are produced on the external surface of the matrix particles and that the activity is limited to only the biocatalyst located in the outer biofilm layer, which comes into contact with the substrate more easily. For the CGTase of *Bacillus agaradhaerens* LS-3C immobilized in polyvinyl alcohol-cryogel, no significant difference was observed among the different beads with respect to their specific activity. Initial cell loading of 1, 3 and 10% (w/v) after activation gave a specific activity of 2.2, 2.5 and 2.8 mg  $\beta$ -CD production/g beads  $\times$  h, respectively [11].

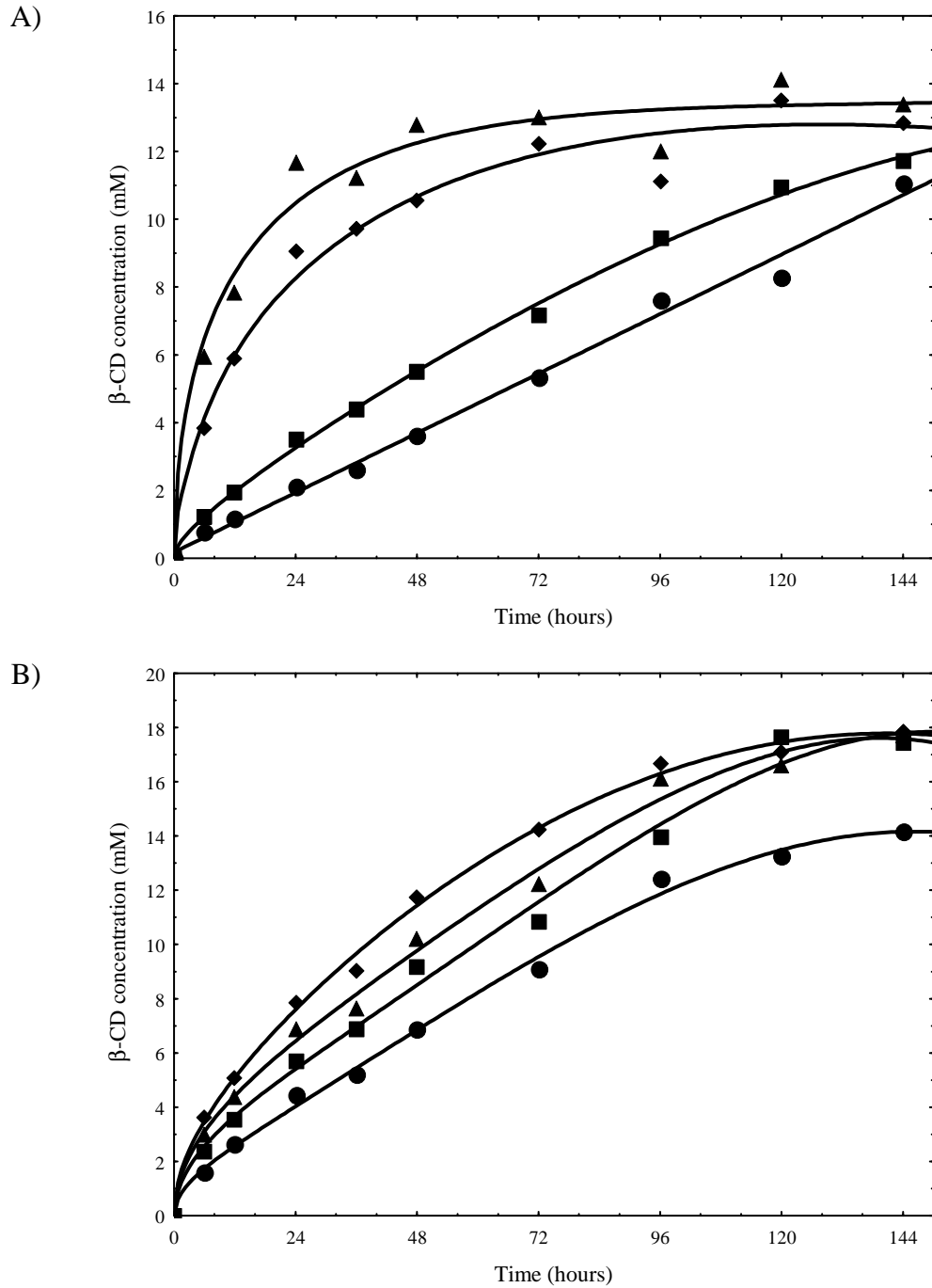


Fig. 3: Initial biomass effect on  $\beta$ -CD production by immobilized cells of *Bacillus firmus* strain 37. A)  $\text{SiO}_2/\text{TiO}_2$  and B)  $\text{SiO}_2/\text{MnO}_2$  (● 1.2 g; ■ 1.8 g; ◆ 2.4 g and ▲ 3.0 g of immobilized cells). Conditions: maltodextrine 10% (w/v) in Tris-HCl buffer, pH 8.0, 50 mM and  $\text{CaCl}_2$  5 mM, 50°C and 120 rpm.

### 3.3 Operational stability

One of the acknowledged advantages of cell immobilization is the ease of cell separation from the production medium, for a possible re-utilization and the greater operational stability given by the number of cycles, which the immobilized cells can be used, without significant loss of activity [23,32,33]. In this study, the operational stability was determined by using 2.4 g of initial biomass in 4 repeated cycles of 144 hours each. For the cells immobilized in SiO<sub>2</sub>/TiO<sub>2</sub> and SiO<sub>2</sub>/MnO<sub>2</sub> the best result was obtained in the first cycle (Fig. 4), reaching  $12.9 \pm 0.4$  and  $17.9 \pm 0.1$  mM of  $\beta$ -CD, respectively. At the end of the second cycle (288 hours test), the cells immobilized in both matrices kept 60% of the  $\beta$ -CD production at the initial cycle. A gradual fall in  $\beta$ -CD production occurred up to the fourth cycle (576 hours test), and  $\beta$ -CD production reduced to 10% of the production of the first cycle for the SiO<sub>2</sub>/TiO<sub>2</sub> matrix and 20% for the SiO<sub>2</sub>/MnO<sub>2</sub> matrix. The enzymatic activity obtained in the first cycle for CGTase of cells immobilized in SiO<sub>2</sub>/TiO<sub>2</sub> and SiO<sub>2</sub>/MnO<sub>2</sub> matrices was 84.4 U/mL and 117.3 U/mL, respectively. It has decreased gradually for each successive cycle, following the same rate observed for  $\beta$ -CD production.

In Fig. 4, the first cycle is described by a curve-shaped almost asymptotic and further cycles by straight-lines. It is possible that the differences in  $\beta$ -CD production in the cycles may be due to weakly bound cells in the matrices that desorbed in the course of the first cycle, thus remaining for the cells of further cycles that were more strongly bound to the matrices. Protein determinations were carried out, and confirmed the cell desorption. The protein content of the recently immobilized cells in the SiO<sub>2</sub>/TiO<sub>2</sub> and SiO<sub>2</sub>/MnO<sub>2</sub> matrices was 0.17 and 0.40 g nitrogen/100 g of sample, respectively, and after the end of a CD production cycle there was an average reduction of 14%.

The repeated use of the immobilized *Mycobacterium* sp. NRRL B-3805 [33] and *Pseudomonas putida* [34] cells on Celite supports did not prove to be effective due to cell desorption, suggesting that the interactions between support and cells are too weak. On the other hand the use of chrysotile as an effective immobilization matrix for mycobacterial cells displayed a significant operational stability, since catalytic activity remained apparently unchanged for a 30-day period. The stability is related not only to product yield, but to mechanical integrity of the support as well [35].

For *Bacillus agaradhaerens* LS-3C immobilized cells, after the ninth cycle (270 hours of test), the CGTase activity was maintained at 70% of the initial rate [11]. A good operational stability was observed with *Bacillus amyloliquefaciens*, immobilized in calcium alginate, which was studied during 14 cycles of 24 hours each, keeping 80% of the initial activity [7]. Vassileva et al. [23] studied the operational stability of *Bacillus circulans* ATCC 21783 immobilized in agar during 5 cycles of 48 hours each. There was a gradual increase of CGTase activity until the fourth cycle, reaching 210 U/mL, meaning a 14% higher enzyme concentration than the initial activity. However, in the fifth cycle the enzyme activity suffered a reduction of 10% (189 U/mL).

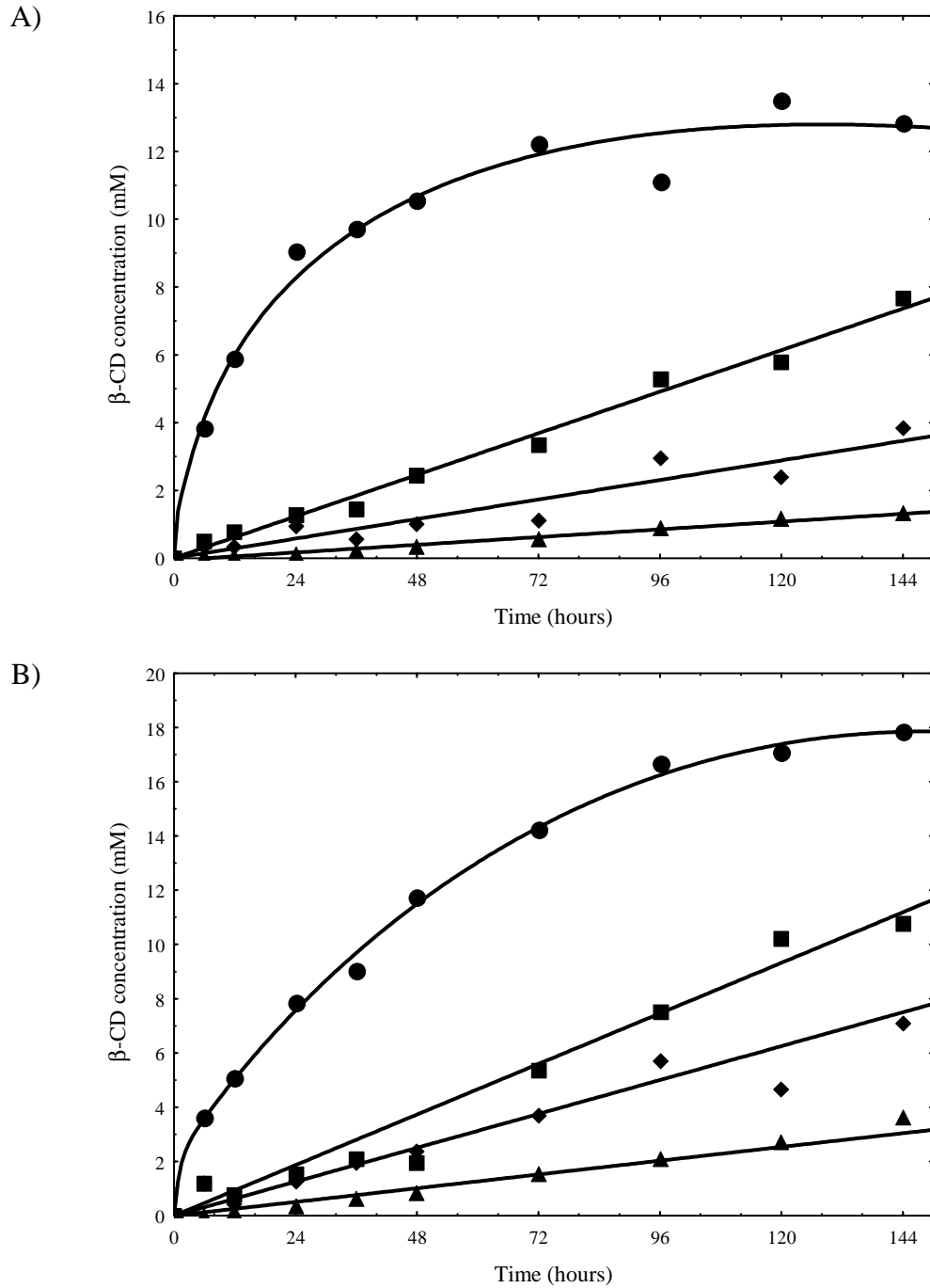


Fig. 4: Operational stability of the immobilized cells of *Bacillus firmus* strain 37. A)  $\text{SiO}_2/\text{TiO}_2$  and B)  $\text{SiO}_2/\text{MnO}_2$  (● 1<sup>st</sup> cycle; ■ 2<sup>nd</sup> cycle; ◆ 3<sup>rd</sup> cycle and ▲ 4<sup>th</sup> cycle). Conditions: maltodextrine 10% (w/v) in Tris-HCl buffer, pH 8.0, 50 mM and  $\text{CaCl}_2$  5 mM, 50°C and 120 rpm.



### 3.4 Storage stability

The long viability and continuous metabolic activity are also advantages for using immobilized cells [6]. The storage stability was investigated using 2.4 g of initial biomass and the cells immobilized in SiO<sub>2</sub>/TiO<sub>2</sub> and SiO<sub>2</sub>/MnO<sub>2</sub> were maintained at 4°C for 210 days. The maximum of β-CD production occurred with the cells stored for 90 days, giving 6.0 ± 0.3 and 4.4 ± 0.4 mM of β-CD for the cells immobilized in SiO<sub>2</sub>/TiO<sub>2</sub> and SiO<sub>2</sub>/MnO<sub>2</sub>, respectively (Fig. 5). Therefore, the results obtained showed that the immobilized cells were quite stable and, after 150 days of storage, they did not present any reduction of β-CD production, in relation to newly made biocatalyst. The long viability of immobilized cells may be due to their different protein, nucleic acid and inorganic substance compositions, compared to the free cells [7]. Also, according to Jamuna et al. [6], in the case of *Bacillus* immobilized cells, the induced stress conditions imposed by the immobilization can alter the synthesis mechanism of the enzyme produced. However, definitive evidence regarding this statement is lacking in previous literature and warrants further studies.

In the storage stability test, control cycles using free cells were also carried out, producing in average 3.0 ± 0.1 mM of β-CD. Therefore, the immobilized cells showed a relative production 2-fold higher for the immobilized cells in SiO<sub>2</sub>/TiO<sub>2</sub> and 1.5-fold higher for SiO<sub>2</sub>/MnO<sub>2</sub>. It is possible suggest that the highest capacity of β-CD production was not a consequence of the increase in the amount of immobilized microbial cells, considering that there was an average reduction of 14% of the total protein content in newly immobilized samples and after the final cycle of CD production. Also, immobilized cells of *Methylomonas* sp. strain GYJ3, immobilized by sol-gel entrapment in sodium silicate, presented an enzymatic activity 1.5-fold higher than the free cells [12].

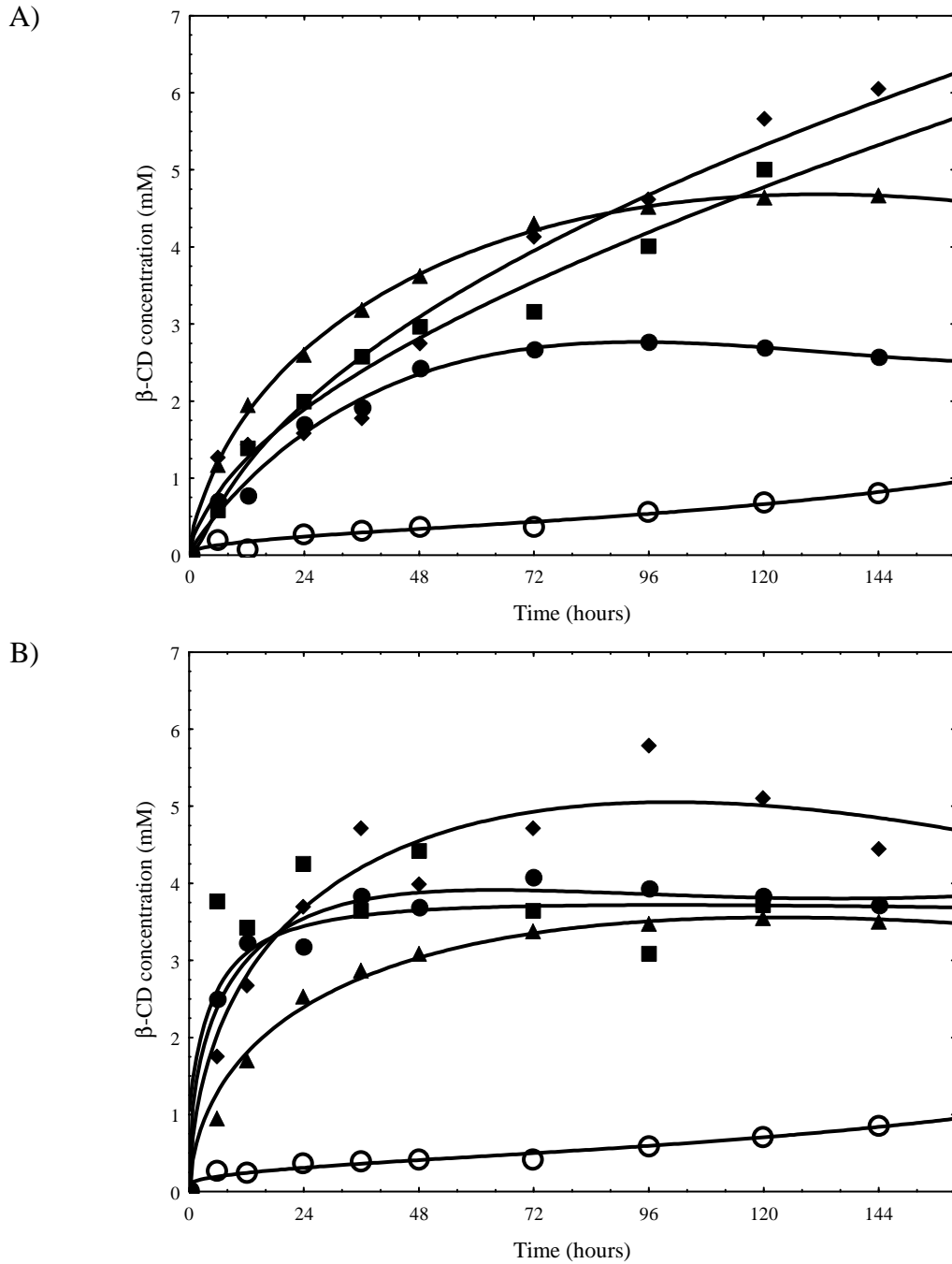


Fig. 5: Storage stability of immobilized cells of *Bacillus firmus* strain 37. A) SiO<sub>2</sub>/TiO<sub>2</sub> and B) SiO<sub>2</sub>/MnO<sub>2</sub>. Storage time: ● zero; ■ 60 days; ◆ 90 days; ▲ 150 days and ○ 210 days. Conditions: maltodextrine 10% (w/v) in Tris-HCl buffer, pH 8.0, 50 mM and CaCl<sub>2</sub> 5 mM, 50°C and 120 rpm.

#### 4. CONCLUSION

Systems of immobilized *Bacillus firmus* strain 37 cells for CGTase production with sol-gel matrices have been developed. However, the present research study also showed the possibility of direct CD production by immobilized cells in inorganic matrices. The sol-gel preparation method of matrices showed to be appropriate and a good adsorption of *Bacillus firmus* strain 37 occurred in SiO<sub>2</sub>/TiO<sub>2</sub> and SiO<sub>2</sub>/MnO<sub>2</sub> matrices.

The SiO<sub>2</sub>/MnO<sub>2</sub> matrix presented advantages compared to SiO<sub>2</sub>/TiO<sub>2</sub> matrix while studying the effect of initial biomass, as the use of 1.8 g of biomass was sufficient to reach the highest  $\beta$ -CD production ( $17.9 \pm 0.1$  mM), while for the SiO<sub>2</sub>/TiO<sub>2</sub> matrix the use of 3.0 g of biomass was necessary to reach a  $\beta$ -CD production 25% smaller. Operational stability tests demonstrated that both matrices maintained good  $\beta$ -CD production up to the end of the second cycle (288 hours test) and a gradual fall in  $\beta$ -CD production occurred up to the fourth cycle, due to cell desorption from the matrices. Storage stability tests showed that the cells immobilized in SiO<sub>2</sub>/TiO<sub>2</sub> presented a  $\beta$ -CD production 36% higher than for the SiO<sub>2</sub>/MnO<sub>2</sub> matrix and, when compared to free cells, the SiO<sub>2</sub>/TiO<sub>2</sub> biocatalyst performance showed a twofold improvement. When these control cycles using free cells were carried out, no significant loss of activity occurred; therefore, the decay observed for the immobilized cells in the operational stability tests can be ascribed to cell leakage from the matrices. The choice of SiO<sub>2</sub>/TiO<sub>2</sub> or SiO<sub>2</sub>/MnO<sub>2</sub> matrices depends on the aim of the use, since both present distinct characteristics and advantages.

CD production from immobilized cells in inorganic matrices prepared by the sol-gel method proved to be as feasible as the production achieved by Martins et al. [11] using PVA-cryogel entrapped cells. The same inference was observed when Tardioli et al. [22] used enzyme immobilized in glyoxyl-agarose. Furthermore, if gram-scale reactions are the objective, the use of large fermentation reactors is not always recommended. Thus, whole-cell immobilization is a good alternative to overcome these problems, allowing several months of storage and thus behaving as a normal reagent [10].

## 5. REFERENCES

- [1] E.M.M. Del Valle, *Process Biochem.* 39 (2004) 1033.
- [2] A. Tonkova, *Enzyme Microbial. Technol.* 22 (1998) 678.
- [3] B.A. Van der Veen, J.C.M. Uitdehaag, B.W. Dijkstra, L. Dijkhuizen, *Biochim. Biophys. Acta* 1543 (2000) 336.
- [4] X. Cao, Z. Jin, X. Wang, F. Chen, *Food Res. Int.* 38 (2005) 309.
- [5] K.A. Connors, *Chem. Rev.* 97 (1997) 1325.
- [6] R. Jamuna, S.V. Ramakrishna, *Enzyme Microbial. Technol.* 14 (1992) 36.
- [7] M.A. Abdel-Naby, R.M. Reyad, A.F. Abdel-Fattah, *Biochem. Eng. J.* 5 (2000) 1.
- [8] G. Mamo, A. Gessesse, *Biotechnol. Tech.* 11 (1997) 447.
- [9] K. Uzunova, A. Vassileva, V. Ivanova, D. Spasova, A. Tonkova, *Process Biochem.* 37 (2002) 863.
- [10] A.L.M. Porto, F. Cassiola, S.L.P. Dias, I. Joekes, Y. Gushikem, J.A.R. Rodrigues, P.J.S. Moran, G.P. Manfio, A.J. Marsaioli, *J. Mol. Catal. B: Enzym.* 19-20 (2002) 327.
- [11] R.F. Martins, F.M. Plieva, A. Santos, R. Hatti-Kaul, *Biotechnol. Lett.* 25 (2003) 1537.
- [12] J. Chen, Y. Xu, J. Xin, S. Li, C. Xia, J. Cui, *J. Mol. Catal. B: Enzym.* 30 (2004) 167.
- [13] J.E. Gonçalves, Y. Gushikem, S.C. Castro, *J. Non-Cryst. Solids* 260 (1999) 125.

- [14] D. Avnir, S. Braun, O. Lev, M. Ottolenghi, *Chem. Mater.* 6 (1994) 1605.
- [15] G. Matioli, G.M. Zanin, M.F. Guimarães, F.F. Moraes, *Appl. Biochem. Biotechnol.* 70-72 (1998) 267.
- [16] G. Matioli, G.M. Zanin, F.F. Moraes, *Appl. Biochem. Biotechnol.* 91-93 (2001) 643.
- [17] R. Jamuna, N. Saswathi, R. Sheela, S.V. Ramakrishna, *Appl. Biochem. Biotechnol.* 43 (1993) 163.
- [18] L.B. Alves, G. Matioli, F.F. Moraes, G.M. Zanin, J.E. Olivo, *J. Incl. Phenom. Macro Chem.* 44 (2002) 399.
- [19] K.C.A. Sobral, R.M.O. Rodrigues, R.D. Oliveira, F.F. Moraes, G.M. Zanin, *J. Incl. Phenom. Macro Chem.* 44 (2002) 383.
- [20] K.C.A. Sobral, R.M.O. Rodrigues, R.D. Oliveira, J.E. Olivo, F.F. Moraes, G.M. Zanin, *Appl. Biochem. Biotechnol.* 105 (2003) 809.
- [21] G. Matioli, F.F. Moraes, G.M. Zanin, *Appl. Biochem. Biotechnol.* 98-100 (2002) 947.
- [22] P.W. Tardioli, G.M. Zanin, F.F. Moraes, *Enzyme Microb. Technol.* 39 (2006) 1270.
- [23] A. Vassileva, N. Burhan, V. Beschkov, D. Spasova, S. Radoevska, V. Ivanova, A. Tonkova, *Process Biochem.* 38 (2003) 1585.
- [24] A. Vassileva, V. Beschkov, V. Ivanova, A. Tonkova, *Process Biochem.* 40 (2005) 3290.
- [25] N. Saswathi, R. Sheela, R. Jamuna, S.V. Ramakrishna, *Bioprocess Eng.* 12 (1995) 283.
- [26] L.L. Hench, J.K. West, *Chem. Rev.* 90 (1990) 33.
- [27] C. Su, B.Y. Hong, C.M. Tseng, *Catal. Today* 96 (2004) 119.
- [28] M. Schneider, M. Maciejewski, S. Tschudin, A. Wokaun, A. Baiker, *J. Catal.* 149 (1994) 326.
- [29] S. Brunauer, S.P.H. Emmett, E. Teller, *J. Am. Chem. Soc.* 60 (1938) 309.
- [30] E.P. Barrett, L.G. Joyner, P.P. Hallenda, *J. Am. Chem. Soc.* 73 (1951) 373.

- [31] Instituto Adolfo Lutz, Normas analíticas do Instituto Adolfo Lutz: Métodos físicos-químicos para análise de alimentos, Ministério da Saúde, Brasília, 2005, p. 1018.
- [32] L. Kabaivanova, E. Dobрева, P. Dimitrov, E. Emanuilova, J. Ind. Microbiol. Biotechnol. 32 (2005) 7.
- [33] N. Llanes, P. Fernandes, R. Leon, J.M.S. Cabral, H.M. Pinheiro, J. Mol. Catal. B: Enzym. 11 (2001) 523.
- [34] P. Fernandes, P. Vidinha, T. Ferreira, H. Silvestre, J.M.S. Cabral, D.M.F. Prazeres, J. Mol. Catal. B: Enzym. 19/20 (2002) 353.
- [35] R. Wendhausen, M. Frigato, P. Fernandes, C.C.C.R. Carvalho, A. Cruz, H.M. Pinheiro, J.M.S. Cabral, J. Mol. Catal. B: Enzym. 32 (2005) 61.

# Livros Grátis

( <http://www.livrosgratis.com.br> )

Milhares de Livros para Download:

[Baixar livros de Administração](#)

[Baixar livros de Agronomia](#)

[Baixar livros de Arquitetura](#)

[Baixar livros de Artes](#)

[Baixar livros de Astronomia](#)

[Baixar livros de Biologia Geral](#)

[Baixar livros de Ciência da Computação](#)

[Baixar livros de Ciência da Informação](#)

[Baixar livros de Ciência Política](#)

[Baixar livros de Ciências da Saúde](#)

[Baixar livros de Comunicação](#)

[Baixar livros do Conselho Nacional de Educação - CNE](#)

[Baixar livros de Defesa civil](#)

[Baixar livros de Direito](#)

[Baixar livros de Direitos humanos](#)

[Baixar livros de Economia](#)

[Baixar livros de Economia Doméstica](#)

[Baixar livros de Educação](#)

[Baixar livros de Educação - Trânsito](#)

[Baixar livros de Educação Física](#)

[Baixar livros de Engenharia Aeroespacial](#)

[Baixar livros de Farmácia](#)

[Baixar livros de Filosofia](#)

[Baixar livros de Física](#)

[Baixar livros de Geociências](#)

[Baixar livros de Geografia](#)

[Baixar livros de História](#)

[Baixar livros de Línguas](#)

[Baixar livros de Literatura](#)  
[Baixar livros de Literatura de Cordel](#)  
[Baixar livros de Literatura Infantil](#)  
[Baixar livros de Matemática](#)  
[Baixar livros de Medicina](#)  
[Baixar livros de Medicina Veterinária](#)  
[Baixar livros de Meio Ambiente](#)  
[Baixar livros de Meteorologia](#)  
[Baixar Monografias e TCC](#)  
[Baixar livros Multidisciplinar](#)  
[Baixar livros de Música](#)  
[Baixar livros de Psicologia](#)  
[Baixar livros de Química](#)  
[Baixar livros de Saúde Coletiva](#)  
[Baixar livros de Serviço Social](#)  
[Baixar livros de Sociologia](#)  
[Baixar livros de Teologia](#)  
[Baixar livros de Trabalho](#)  
[Baixar livros de Turismo](#)